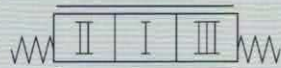


Spool controls – A-side

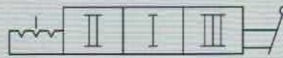
Spool control 9

9 Spring centered
9W for cable control



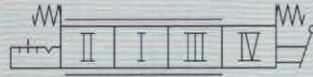
Spool control 10

Detents at positions 1, 2 and 3



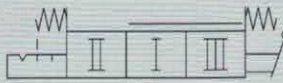
Spool control 11

Spring centering with detent
at position 4



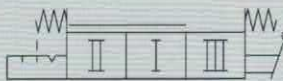
Spool control 13

Spring centering with detent
at position 2



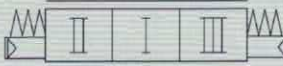
Spool control 14

Spring centering with detent
at position 3



Spool control P

Pneumatic*



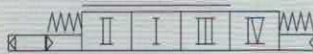
Spool control EP

Electro / pneumatic on / off**



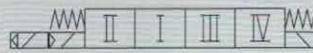
Spool control P5

Pneumatic control with detent
at position 4*



Spool control EP5

Electro / pneumatic on / off with
detent in position 4**



Spool control MSLA

Spool control, stroke limitation



* Connection G 1/8" BSP

** Power consumption	4.8 W
Rated voltage	24 V
Max voltage variation	+/- 10 %
Duty factor	100 %
Connection	according to EN175301-803/B
Protection class	IP65

Spool controls – B-side

Bracket M19

Bracket for 3-position spool

Bracket M211

Bracket for 4-position spool and
for 4-pos EP-spool control

Bracket M212

Bracket for 4-position spool
with manual control